



- Key Considerations**
- Predominantly greenfield site
 - Existing trees to be retained as far as possible
 - Existing watercourse across site
 - Existing overhead power lines across site
 - Acoustics - potential road noise from Mandeville Road
 - Consider links to existing pedestrian pathways, surrounding housing development and nearby bus stop.
 - Consider sun path & orientation of building



Site Analysis



- NOTES**
- Classroom blocks comprise 3 key-stages: Foundation stage, Keystage 1 and Keystage 2, along with a Learning Support Centre and a Nursery.
 - Classrooms are clustered around a central core comprising a Multi-Purpose Hall, Library, Dining Hall, Administration, Group Rooms etc.
 - Classroom blocks are orientated to take advantage of sunlight.
 - Building configured to sit sympathetically among the existing trees



Concept Sketch

Site Area = 3.83ha
 Hard Play = 2150 sq.m
 Grass Play = 7000 sq.m

Area of new School, incl LSC = 2775 sq.m
 School Meals = 365 sq.m
 Nursery = 275 sq.m

Car Parking

Staff Parking:	53 places
Accessible parking:	3 places
Visitors:	27 places
School meals:	4 places
TOTAL =	87 places

Site Plan

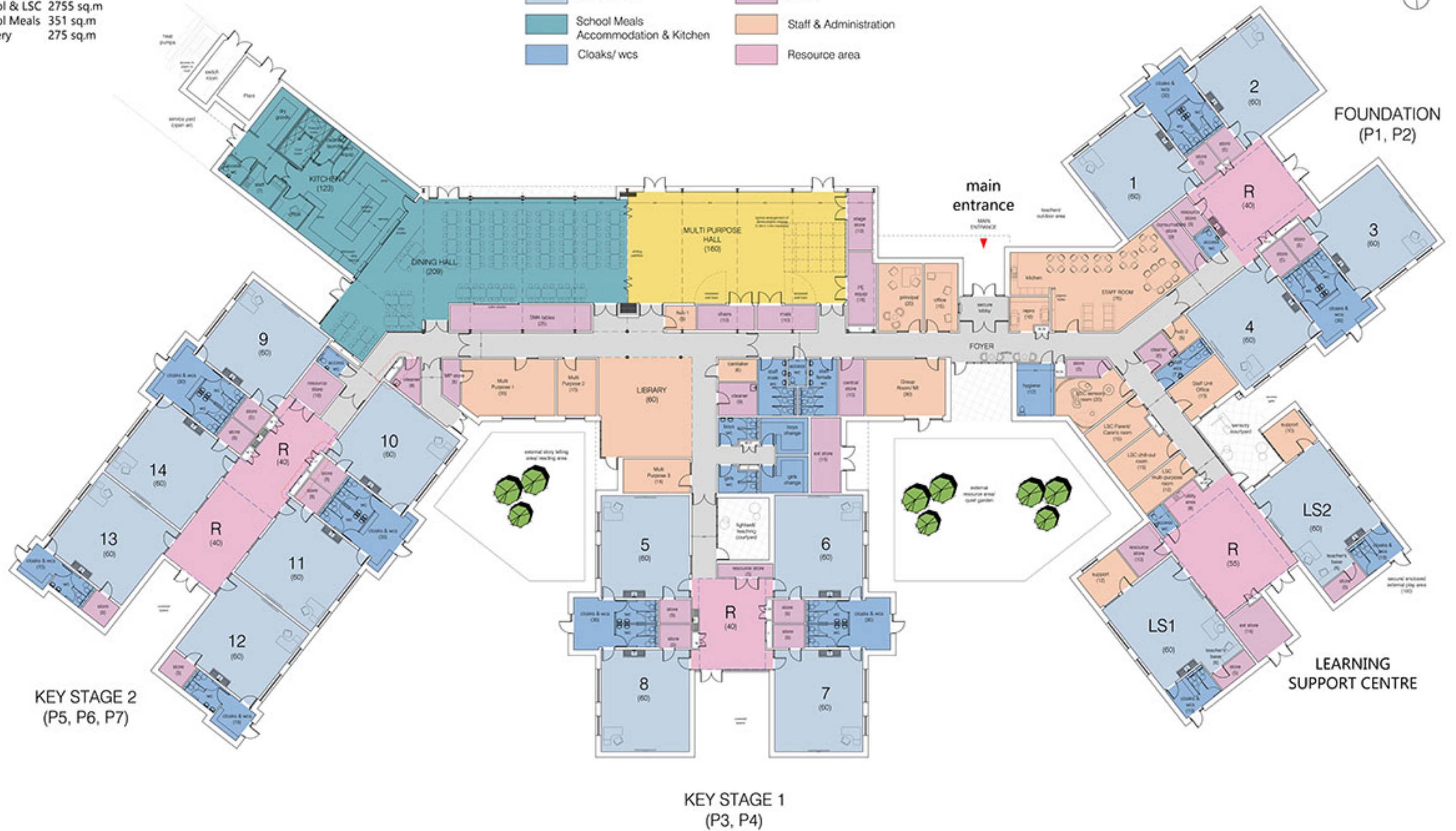
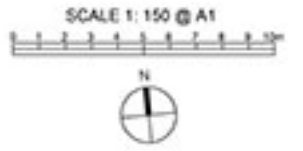
For Public Consultation: September 2023

Sheet 1

Portadown Integrated Primary School
Proposed new 14 Classroom Primary School, Learning Support
Centre, and Nursery

Floor Areas
 School & LSC 2755 sq.m
 School Meals 351 sq.m
 Nursery 275 sq.m

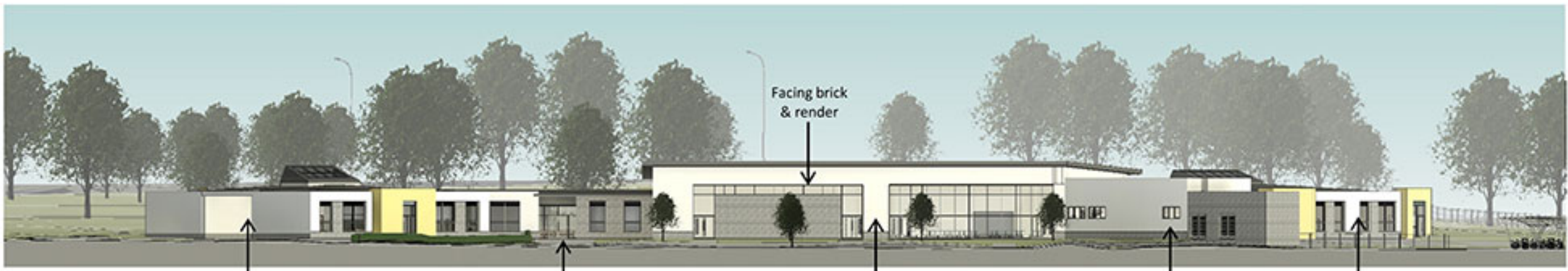
- Circulation
- Classrooms
- School Meals Accommodation & Kitchen
- Cloaks/ wcs
- Multi Purpose Hall
- Stores
- Staff & Administration
- Resource area



Floor Plan

For Public Consultation: September 2023

Sheet 2



1
7001
Elevation 1
Scale: 1 : 200

Foundation Stage Main entrance Multi-Purpose Hall & Dining Kitchen & Plant Room Key Stage 2



2
7001
Elevation 2
Scale: 1 : 200

Key Stage 1 Key Stage 1 facing brick plinth & render Learning Support Centre Nursery



3
7001
Elevation 3
Scale: 1 : 200

Learning Support Centre facing brick plinth & render Foundation Stage Main entrance Multi-Purpose Hall & Dining



4
7001
Elevation 4
Scale: 1 : 200

Multi-Purpose Hall & Dining Kitchen & Plant Room facing brick plinth & render Key Stage 2 coloured render

Elevations
Sheet 3

For Public Consultation: September 2023



General aerial view from North - East



Aerial view from South - East



Main entrance area



Multi-Purpose Hall & Dining Hall



Aerial view from South - West



View of School & car park from North - West



Outdoor reading area between Key Stages 1 & 2



View of School from South - East



Dining Hall



Typical foundation stage classroom



Entrance foyer looking towards quiet garden



View of School from South (Mandeville Road)



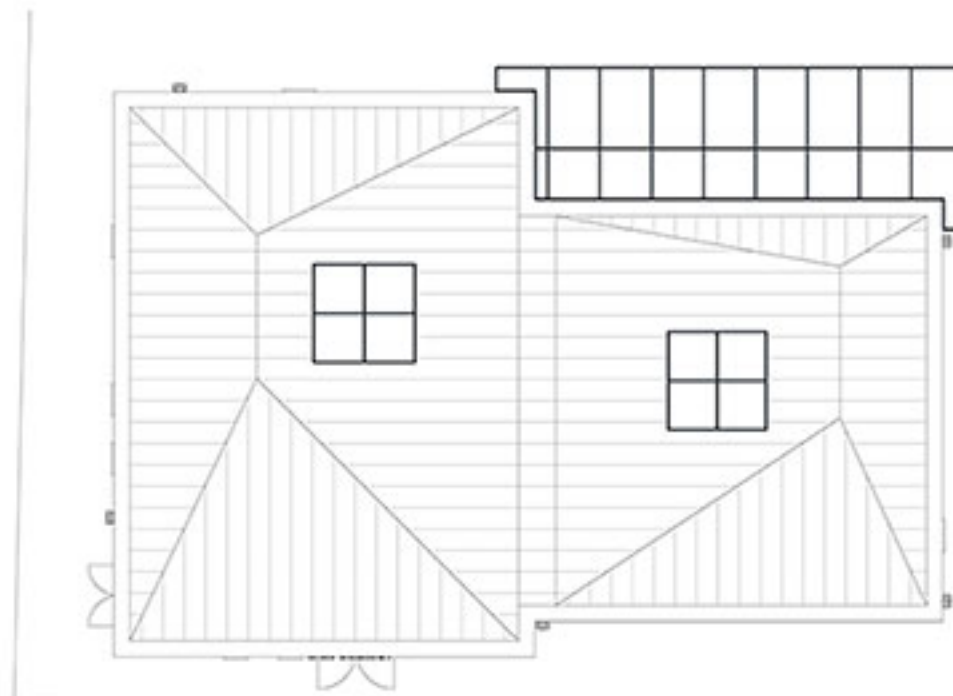
Resource Base in Key Stage 2 wing

For Public Consultation: September 2023

Sheet 4



1 Plan - Nursery Unit
Scale: 1 : 100



2 Roof Plan Nursery
Scale: 1 : 100



3 West elevation
Scale: 1 : 100

Main entrance
timber cladding
facing brick plinth & render



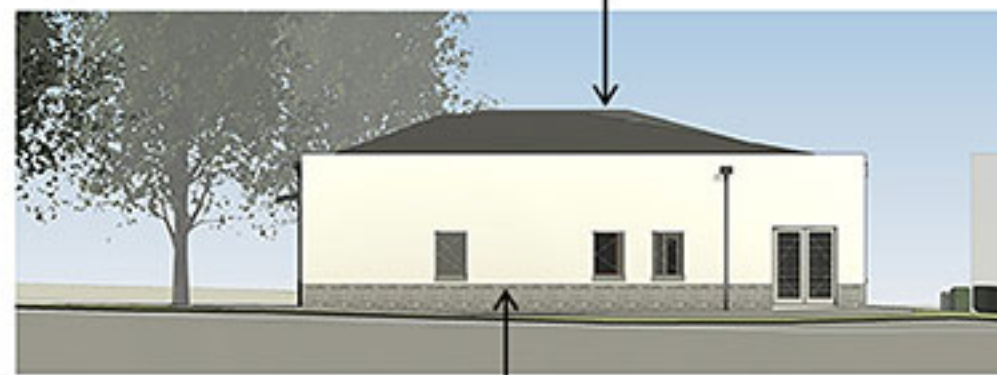
4 South elevation
Scale: 1 : 100

facing brick plinth & render
membrane roof



5 East elevation
Scale: 1 : 100

timber cladding
Aluminium glazing
facing brick plinth & render



6 North elevation
Scale: 1 : 100

facing brick plinth & render

